



ALBURY ENTERTAINMENT CENTRE LANDSCAPE DEVELOPMENT PLAN

JULY 2022

T.C.L



report prepared by
TCL

July 2020

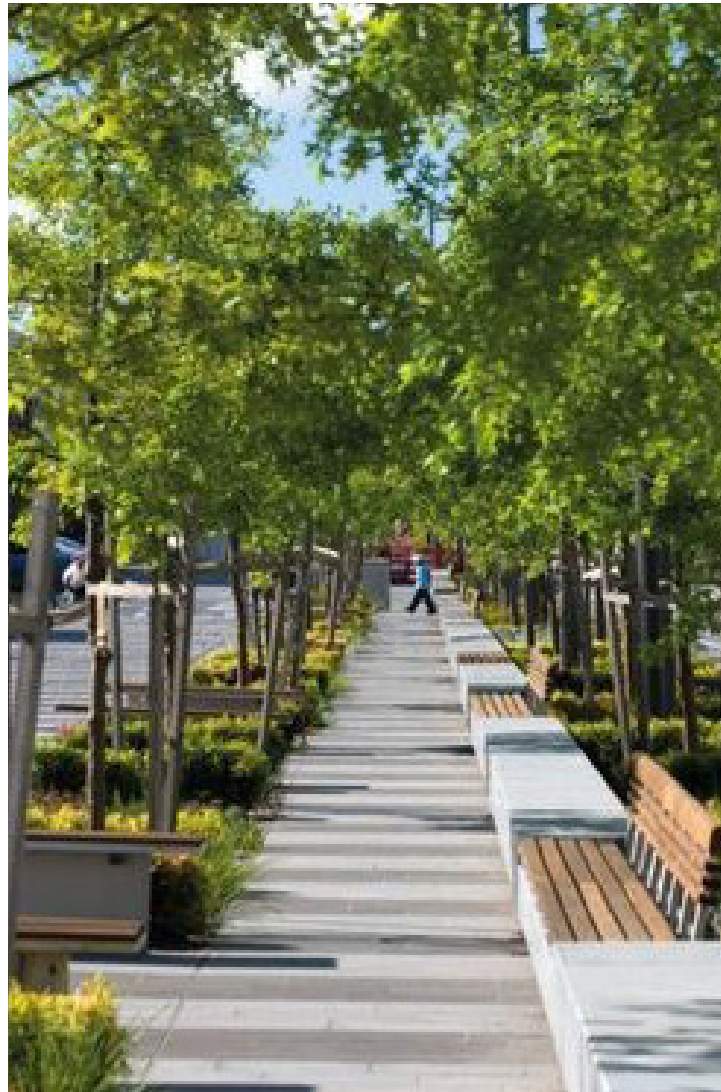
Title	Date	By	Approved
Development Plan Issue	23.08.21	LD	PL
Development Plan Issue - Amended Swift Street	07.07.22	LD	PL
Development Plan Updated Amended Parking	25.07.22	LD	PL

ALBURY ENTERTAINMENT CENTRE LANDSCAPE DEVELOPMENT PLAN

JULY 2021



LANDSCAPE DESIGN AMBITION



Pedestrian Focus Environments

People are at the heart of this building and the landscape will create spaces for pedestrians to safely navigate through and around the building.



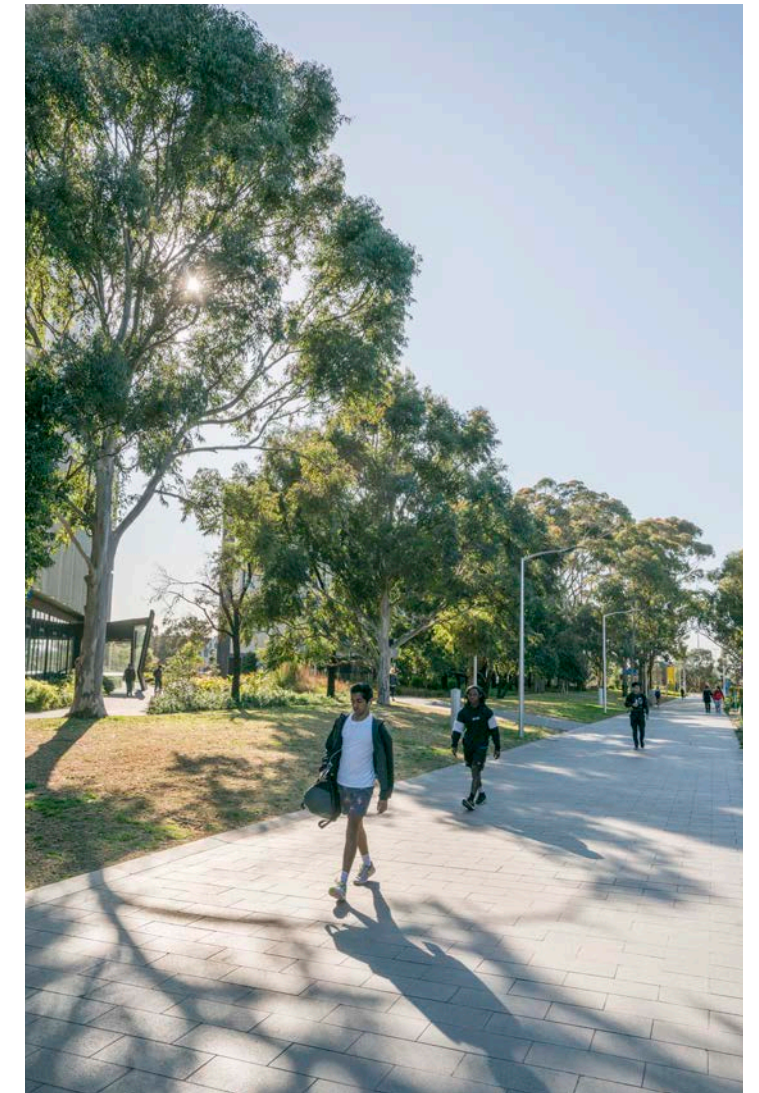
Social / Active Landscapes

The design enables an active ground plan providing various spaces for different sized groups to inhabit creating a variety of places to connect with nature and the city. A key focus on shady environs and heat mitigation strategies have been explored to increase user comfort.



Fabric of the City

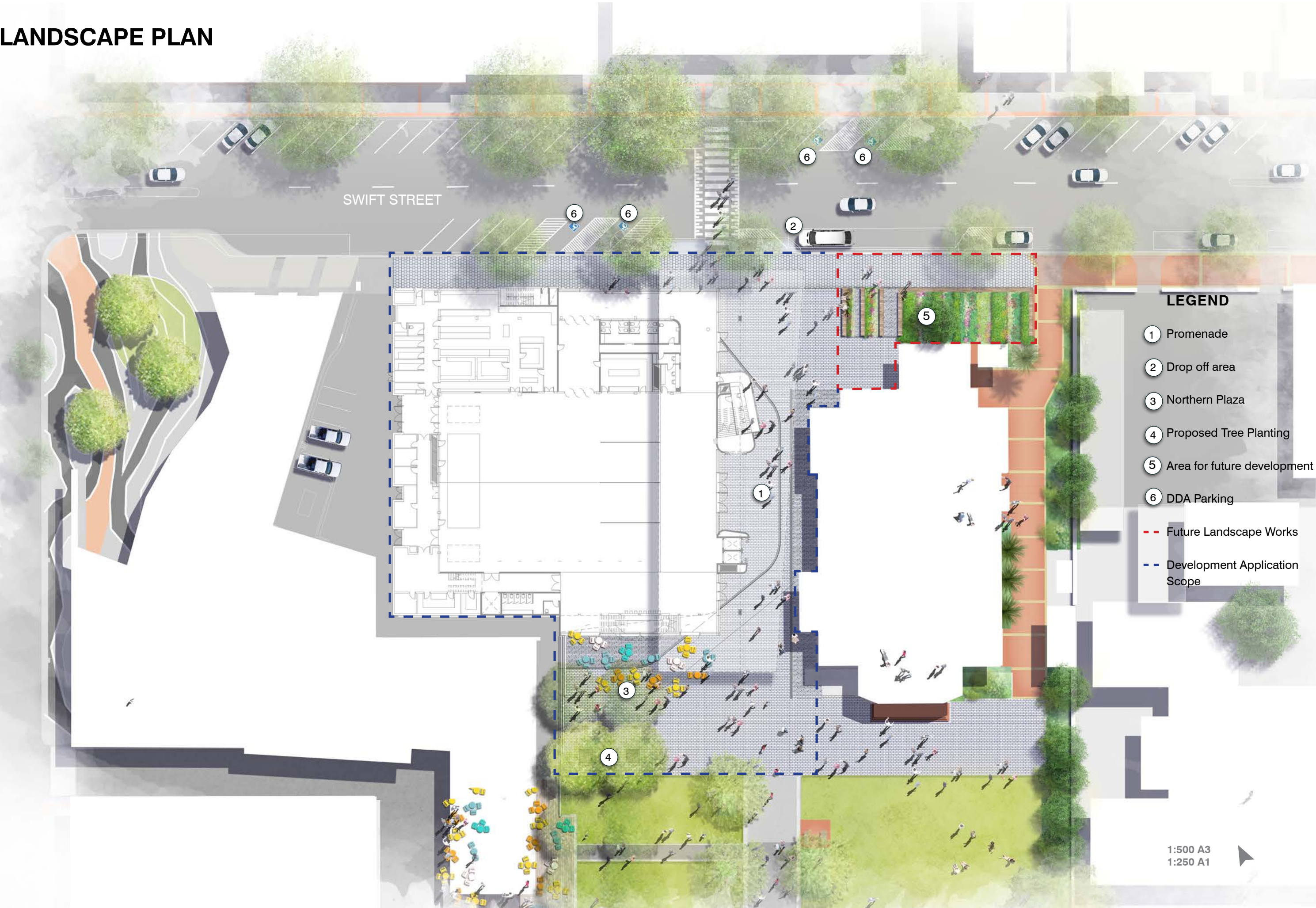
Paving materiality will integrate with the city palette establishing a connection to the city. The landscape design proposes a new hierarchy of paving for this development to enhance the civic amenity of the building.

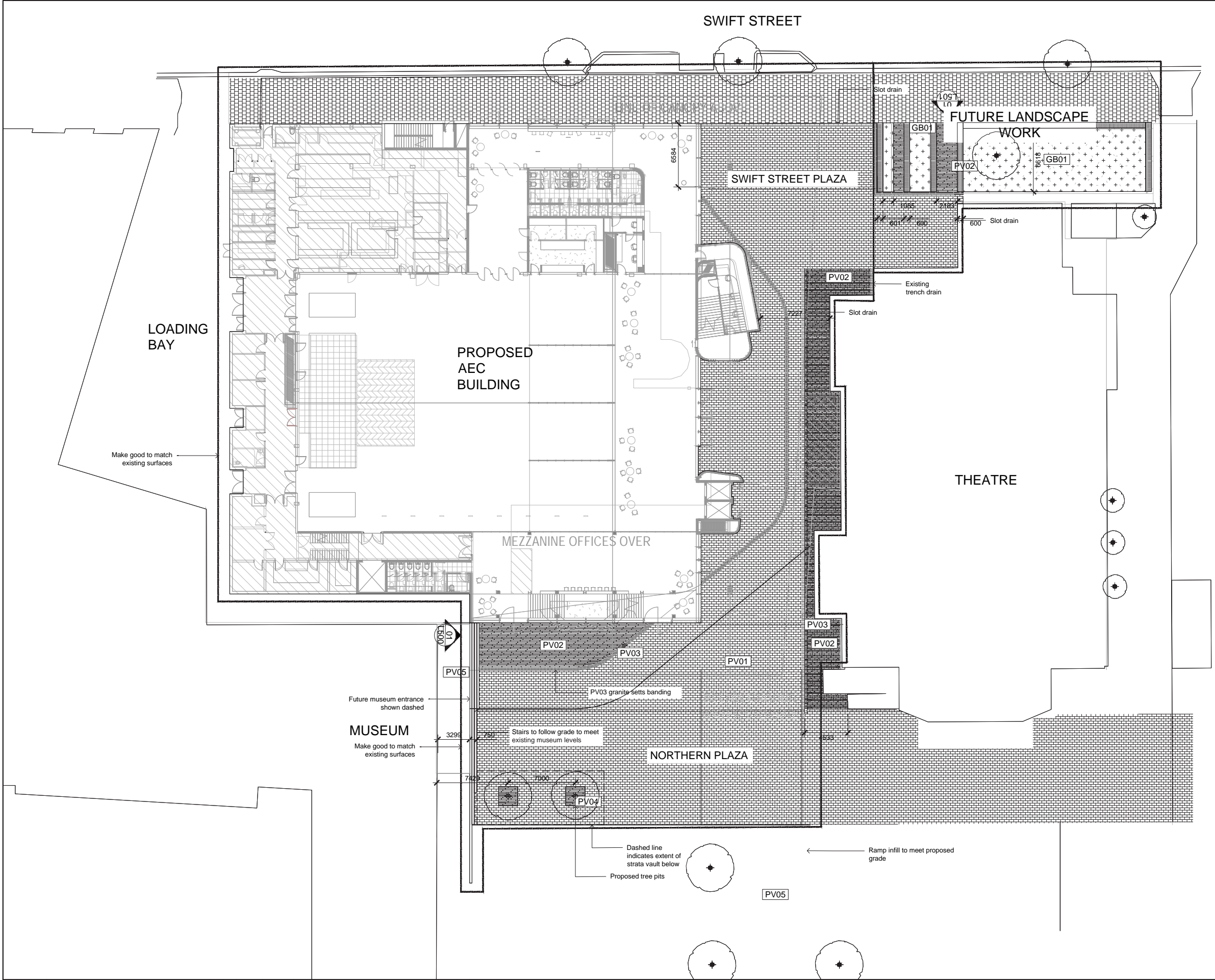


Integrated Environment

The design will look at various strategies to integrate planting, traffic requirements, DDA access to ensure a safe pedestrian focused landscape.

LANDSCAPE PLAN

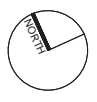




- LEGEND**
- Extent of Works
 - Building Envelope
 - Existing Tree
 - Proposed Tree
 - PV01 Stone Paving
 - PV02 Stone Paving Type 02
 - PV03 Stone Setts
 - PV04 Tree Pit
 - PV05 Asphalt
 - GB01 Garden Bed
 - Trench Grate
 - Slot Drain

Rev	Date	Revision Details	By	Chk	App	Rev	Date	Revision Details	By	Chk	App
-	23.08.21	DEVELOPMENT APPLICATION	KG	LD	PL						

Consultant File Reference: M2022
ALBURY ENTERTAINMENT CENTRE
525 Swift Street, Albury
T.C.L
TAYLOR, CULLITY, LETHBRIDGE



Designed by
TCL
Drawn by
KG
Checked by
LD
Approved by
PL

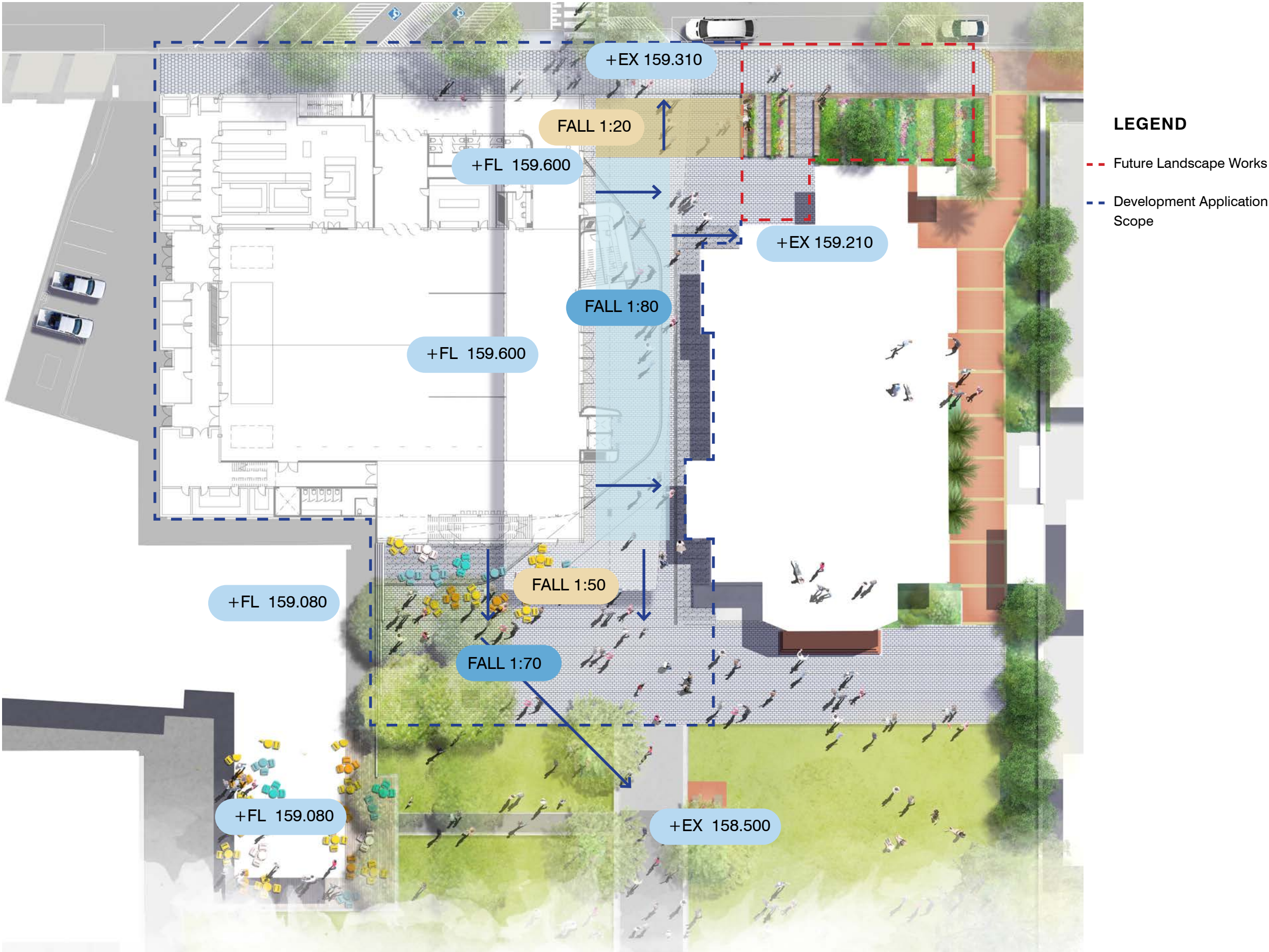
Date
30.04.21

Status:
DEVELOPMENT APPLICATION
ISSUE FOR INFORMATION

Drawing:
AEC PLAZA
Sheet:
SHEET 1 OF 1
Purpose:
SURFACES

Date:
23.08.21
Scale:
1:200
Drawing No.
L400
Rev.
-

GRADING
BUILDING LEVELS



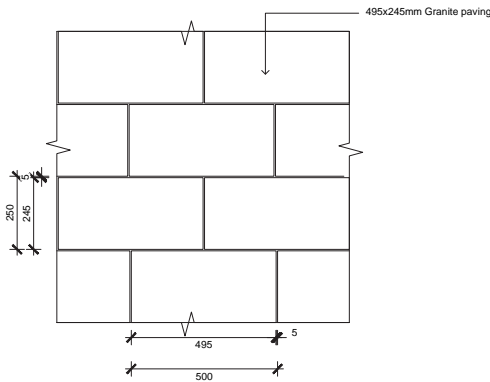
PAVEMENT

Paving hierarchy

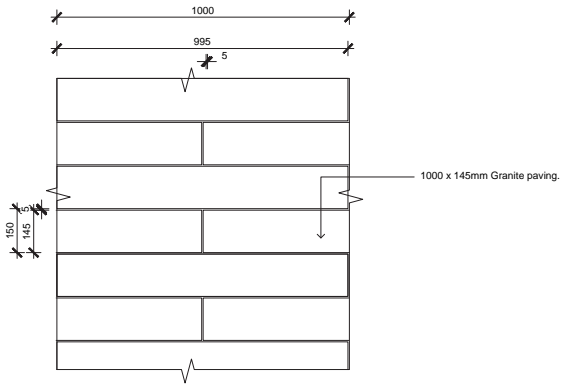
Hard treatments to the landscape will be robust and durable materials, where appropriate these will be Council standard materials and specifications.

The development proposes a new civic hierarchy of pavement to increase quality of the public realm at this cultural institution and also decrease the size of the paving at key moments, terraces and tree pits for legibility.

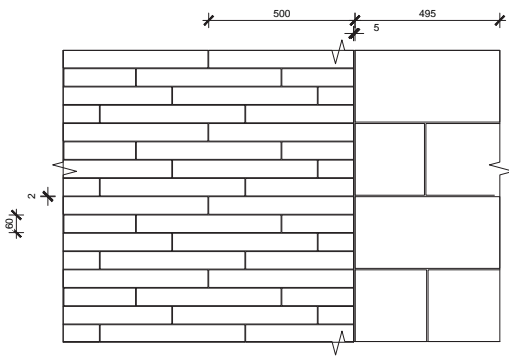
The landscape where possible will integrated sustainability best practice principals to inform material selection.



01 | PV01 PLAZA STONE PAVING LAYOUT
Detail Scale 1:10



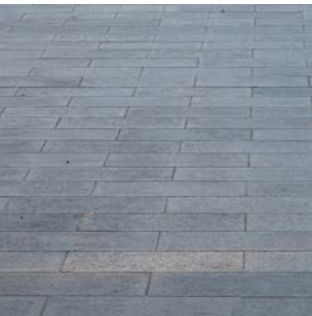
02 | PV02 STONE PAVING LAYOUT
Detail Scale 1:10



03 | PV03 TREE PIT STONE PAVING LAYOUT
Plan Scale 1:10



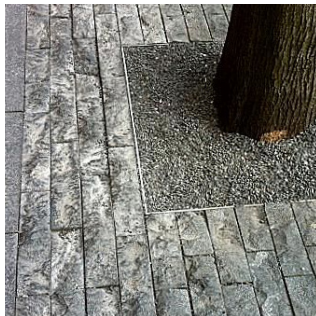
Pedestrian Footpaths
300 x 300 x 40mm
Concrete
Council standard.



Promenade / Avenues
250 x 500 x 60mm
High Quality Stone
Medium Format



Plaza / Building Edges
150 x 500 x 60mm
High Quality Stone
Long Format

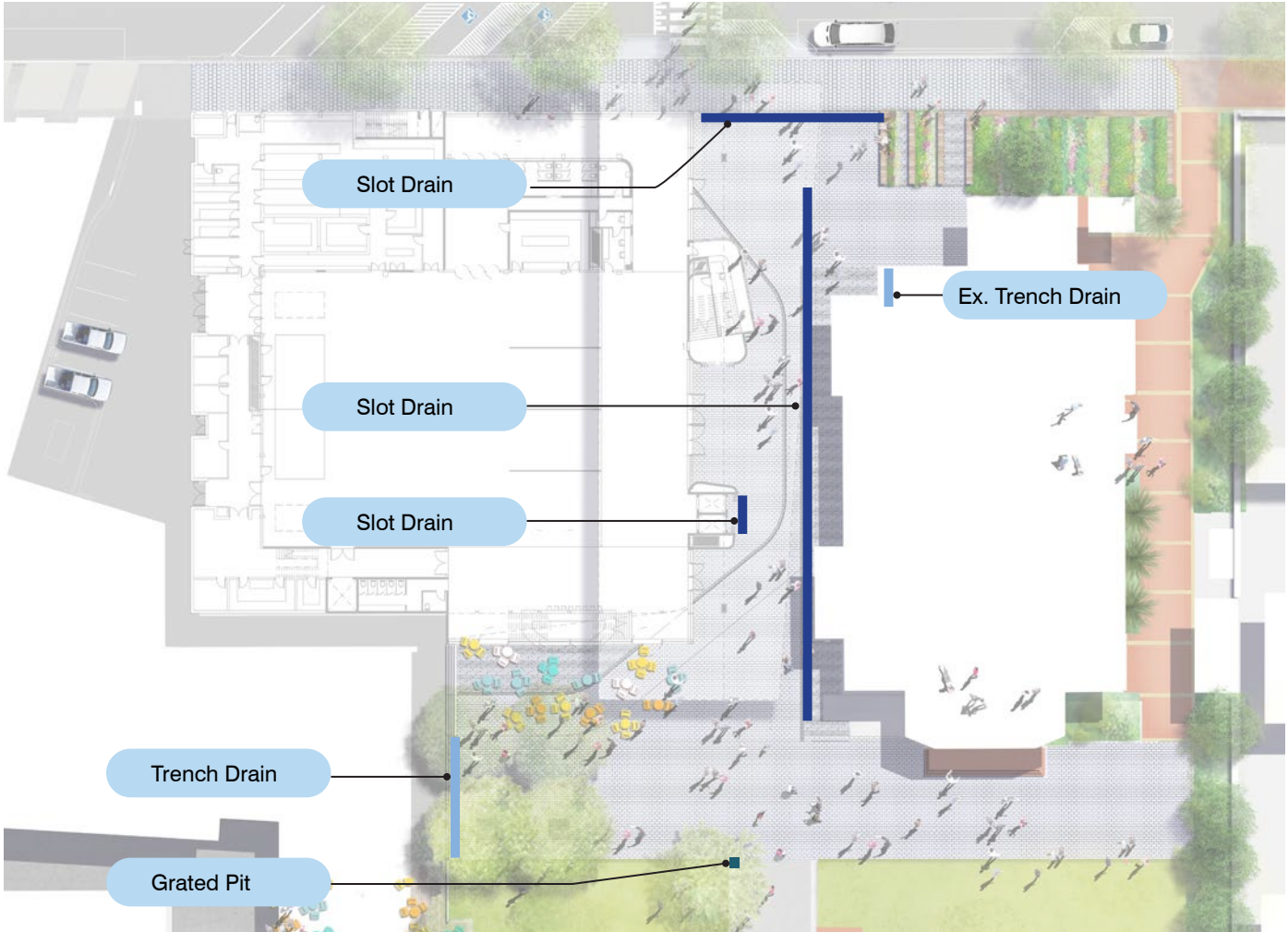


Fine Grain Tree Pits
65 x 300 x 40mm
High Quality Stone /
split face / permeable
Fine Grain



Back of house
Asphalt
Council standard.

DRAINAGE



Slot Drain

Narrow drainage solution with less visual appearance



Infill Pit Lids

Stone infill pit lids



Stainless Steel

SS Trench Drain / SS Heelguard Grated Pits

T.C.L